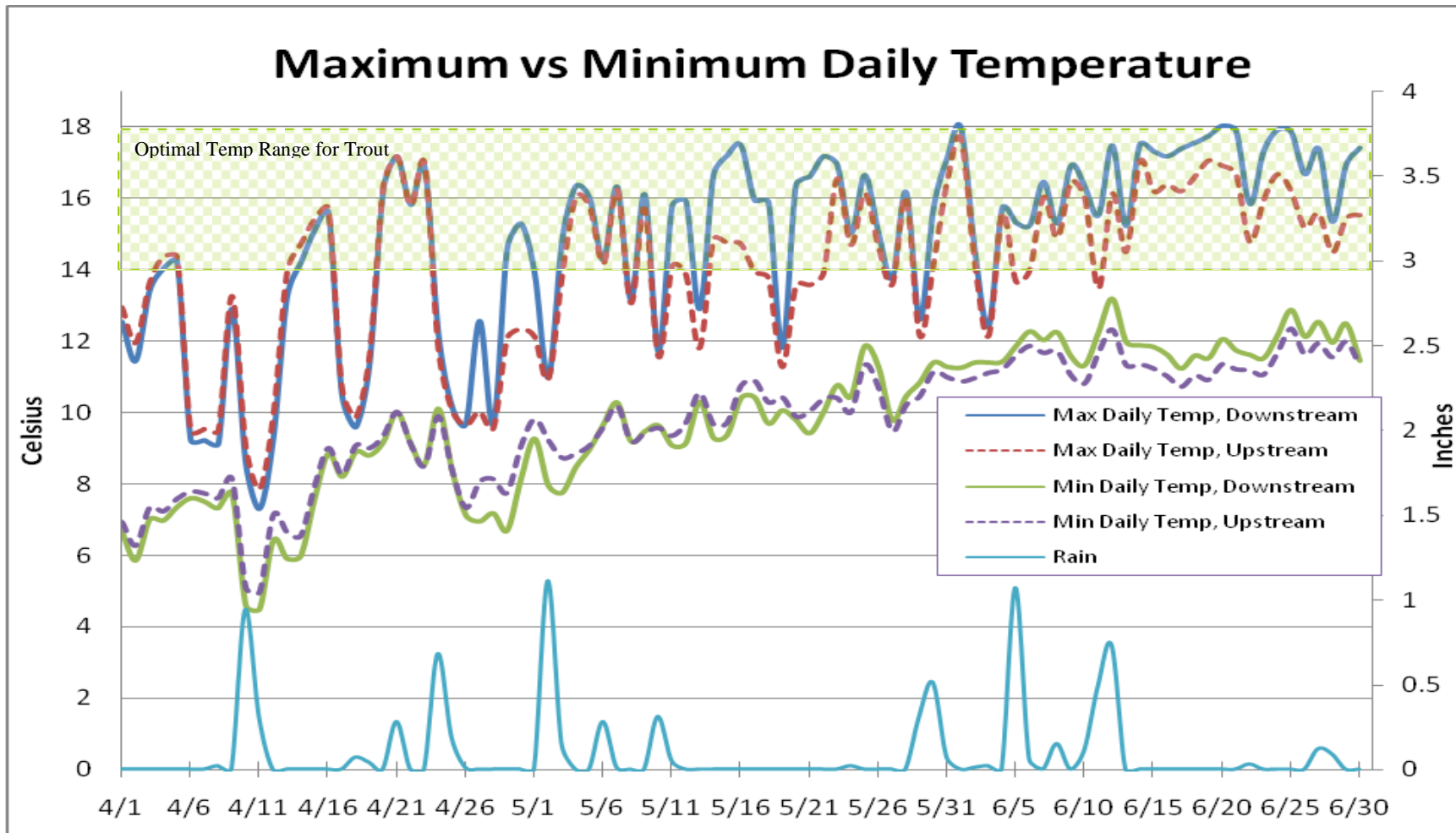


Eagle Creek Temperature Study 2nd Quarterly Report, 2008

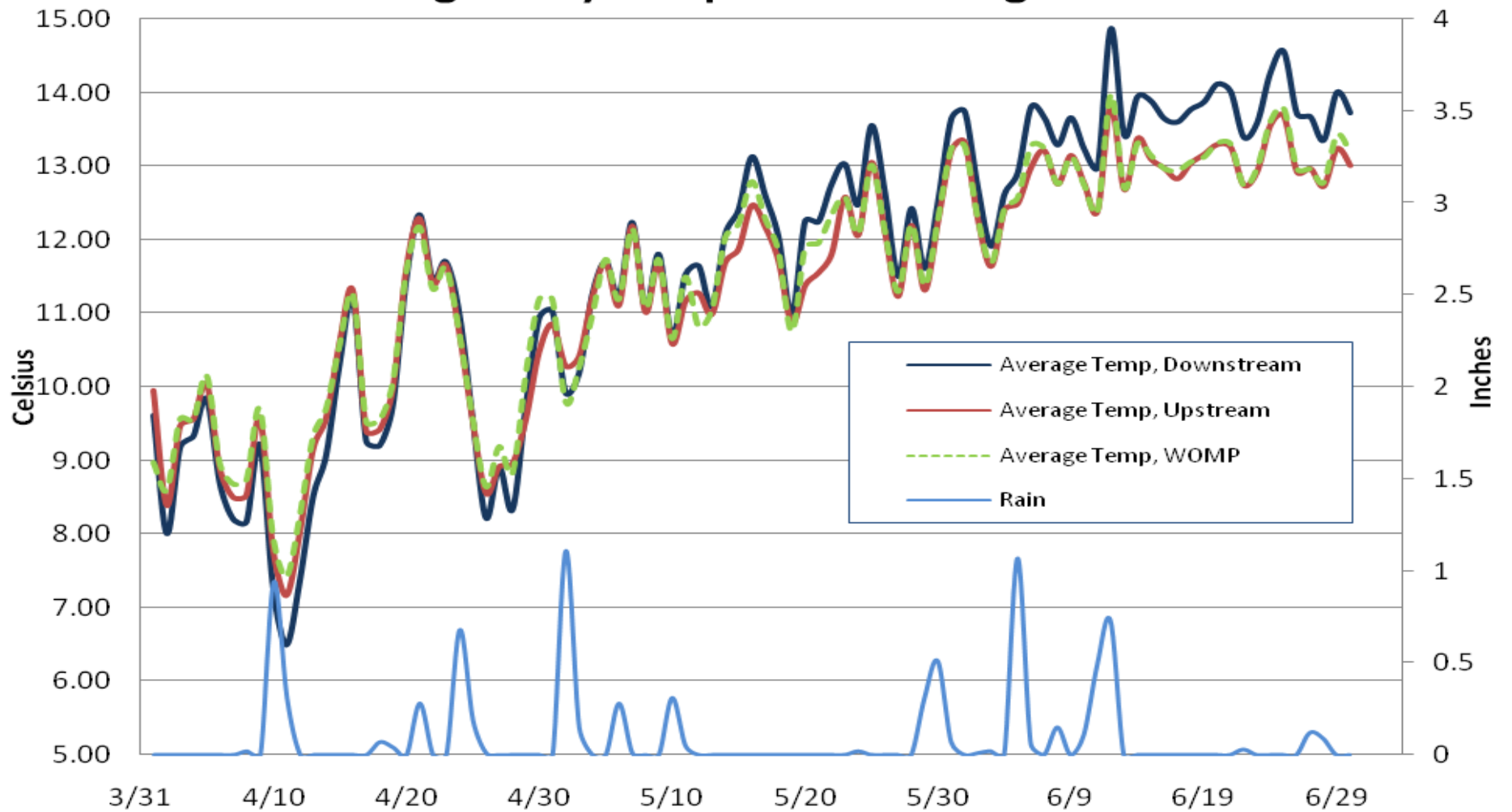
Prepared for LMRWD
By Jaime Rockney
September 2008





This graph represents the maximum and minimum daily temperatures of the Hobo logger locations on Eagle Creek. The upstream logger is located 450 feet south (upstream) of Hwy 101 and the downstream logger is located 450 feet north (downstream) of Hwy 101. Optimal temperature range for trout is 12-18° Celsius.

Average Daily Temperature in Eagle Creek



This graph represents average daily temperatures at the upstream logger, downstream logger, and Eagle Creek WOMP station.