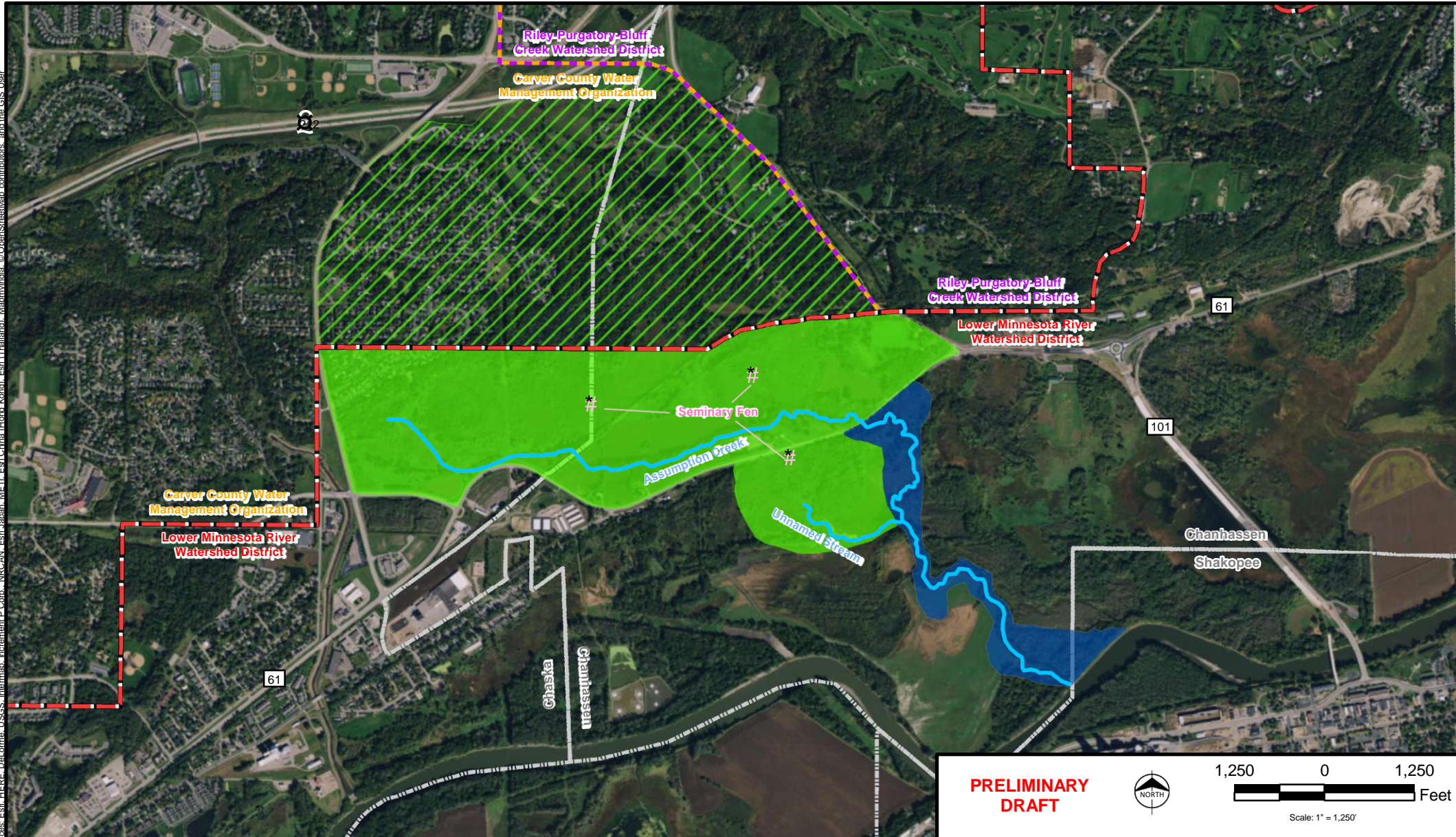


Path: Z:\Clients\ENVI\LMR\WD\95111_WatershedPlan\Studies\Geospatial\ArcDocs\Seminary_Fen_and_Assumption_Creek_Overview.mxd tbeemer 2/28/2017
 COPYRIGHT © 2017 BURNS & McDONNELL ENGINEERING COMPANY, INC.
 Source: Esri, HERE, DeLorme, USGS, Intermap, increment P Corp., NRCAN, Esri, Japan, METI, Esri, China (Hong Kong), Esri, Thailand, Swire, India, © OpenStreetMap contributors, and the GIS User Community



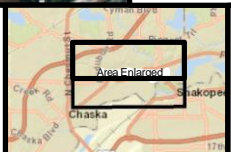
PRELIMINARY DRAFT

NORTH

1,250 0 1,250 Feet

Scale: 1" = 1,250'

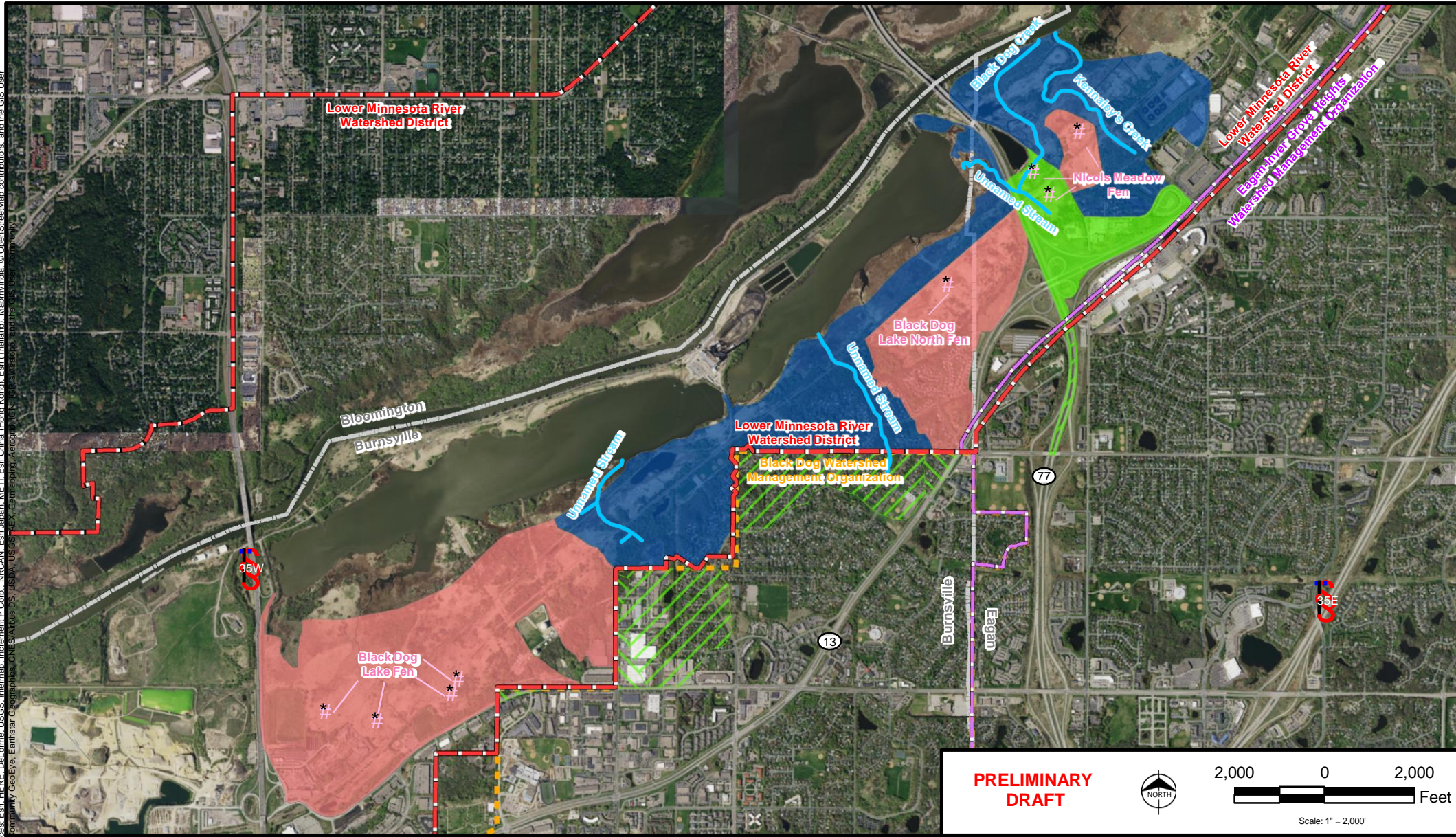
High Value Resource Areas (HVRA)	MNDNR Publicly Available Data	Jurisdictional Boundaries
HVRA Type 1 (Fen)	Calcareous Fen Point	Municipal Boundary
HVRA Type 2 (Trout Stream)	Trout Stream	Riley-Purgatory-Bluff Creek Watershed District
HVRA Type 3 (Fen & Trout Stream)	Trout Pond/Lake	Lower Minnesota River Watershed District
HVRA Outside of LMRWD		



DRAFT High Value Resource Areas
 Seminary Fen & Assumption Creek
 Overview

March 2017

Path: Z:\Clients\ENVI\LR\WD\9511_WatershedPlan\Studies\Geospatial\ArcDocs\BD&NM_Fen_and_BD&Kennels_Creek_Overview.mxd tbeemer 2/28/2017
 COPYRIGHT © 2017 BURNS & McDONNELL ENGINEERING COMPANY, INC.
 Source: Esri, HERE, DeLorme, USGS, Intermap, increment P Corp., NRCAN, Esri, Japan, METI, Esri, China (Harc), Korea, Swis, (Thailand), Mapbox, © OpenStreetMap contributors, and the GIS User Community



PRELIMINARY DRAFT

2,000 0 2,000 Feet

Scale: 1" = 2,000'

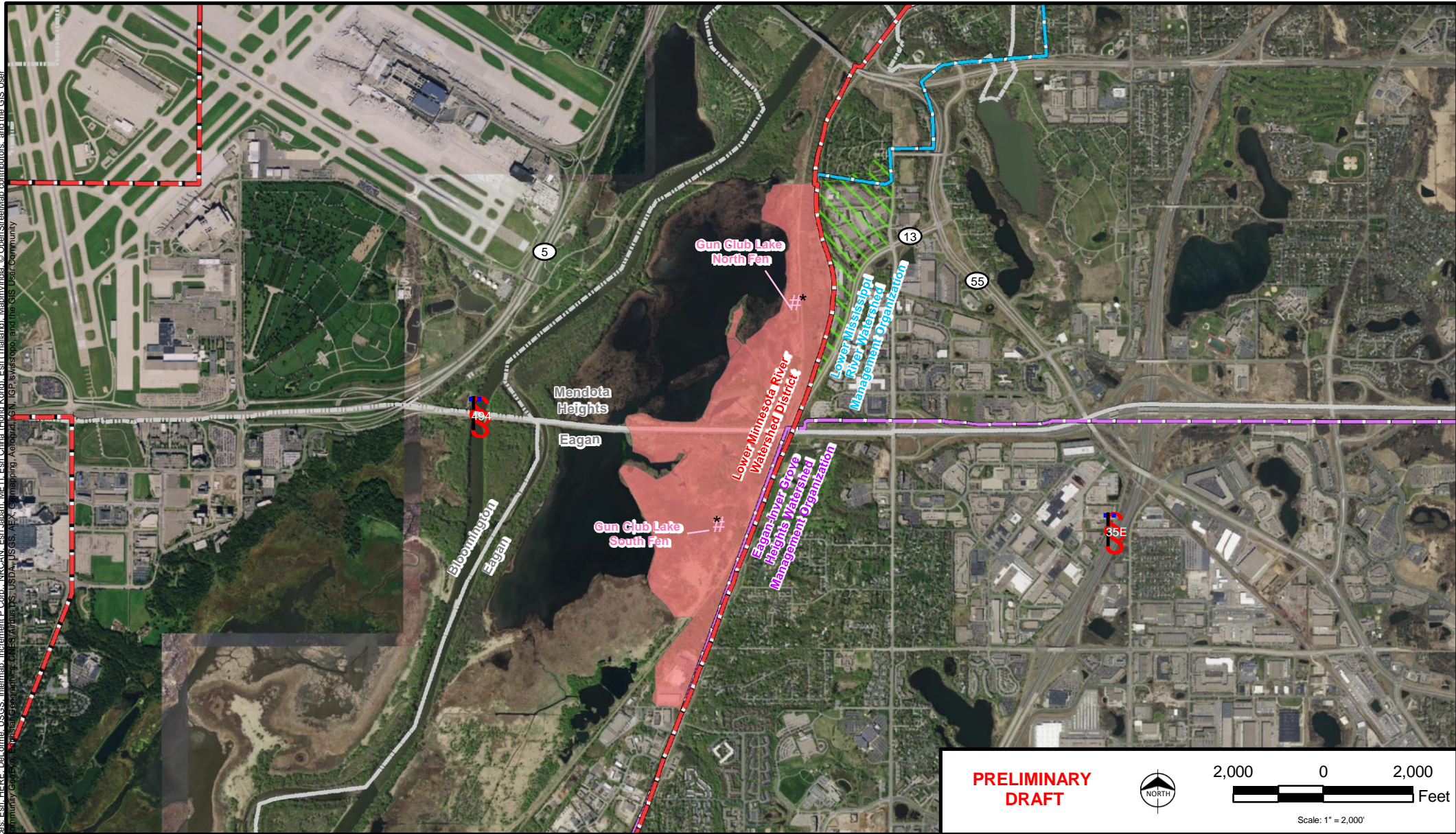
High Value Resource Areas (HVRA)	MNDNR Publicly Available Data	Jurisdictional Boundaries
 HVRA Type 1 (Fen)	 Calcareous Fen Point	Municipal Boundary
 HVRA Type 2 (Trout Stream)	 Trout Stream	Lower Minnesota River Watershed District
 HVRA Type 3 (Fen & Trout Stream)	 Trout Pond/Lake	Riley-Purgatory-Bluff Creek Watershed District
 HVRA Outside of LMRWD		Black Dog Watershed Management Organization

Bloomington Area Enlarged
Burnsville Eagan Apple Valley

BURNS & McDONNELL

DRAFT High Value Resource Areas
Black Dog/Nichols Meadow Fen
& Black Dog/Kennels Creek
Overview

March 2017



PRELIMINARY DRAFT

NORTH

2,000 0 2,000 Feet

Scale: 1" = 2,000'

High Value Resource Areas (HVRA)	MNDNR Publicly Available Data	Jurisdictional Boundaries
HVRA Type 1 (Fen)	Calcareous Fen Point	Municipal Boundary
HVRA Type 2 (Trout Stream)	Trout Stream	Lower Minnesota River Watershed District
HVRA Type 3 (Fen & Trout Stream)	Trout Pond/Lake	Riley-Purgatory-Bluff Creek Watershed District
HVRA Outside of LMRWD		Lower Mississippi River Watershed Management Organization



DRAFT High Value Resource Areas
Gun Club Fen
Overview

March 2017

