



LOWER MINNESOTA RIVER WATERSHED DISTRICT

Executive Summary for Action

Lower Minnesota River Watershed District Board of Managers Meeting

Wednesday, April 16, 2025

Agenda Item

Item 7. A. - Award Water Resource Restoration Fund Grants

Prepared By

Linda Loomis, Administrator

Summary

The 2025 LMRWD Budget allocated \$100,000 for a grant program available to cities within the LMRWD. The Water Resources Restoration Fund grant program is promoted during annual municipal coordination meetings and via direct emails. This year, two applications were received from the cities of Eden Prairie and Shakopee. Young Environmental Consulting Group reviewed the applications and exhibits on behalf of the LMRWD. Attached are the details of the applications and the methodologies used to determine funding.

Recommendations are to award funds as follows:

- Eden Prairie \$9,720
- Shakopee \$90,280

The cities have been notified of the recommendation and will have representatives at the meeting to answer any questions Managers may have.

Attachments

Technical Memorandum – LMRWD Water Resources Restoration Fund Review dated April 9, 2025

Recommended Action

Motion to award Water Resources Restoration Funds to the City of Shakopee in the amount of \$90,280 and to Eden Prairie in the amount of \$9,720, and to enter into cooperative agreements with both cities outlining the roles and expectations for advancing the projects and managing the grant

Technical Memorandum



To: Linda Loomis, Administrator
Lower Minnesota River Watershed District (LMRWD)

From: Erica Bock, Staff Water Resources Scientist II
Jenny Mocol-Johnson, Water and Natural Resources Program Manager

CC: Kirby Templin, PE, Water Resource – Environmental Manager, City of Shakopee
Lori Haak, Water Resources Coordinator, City of Eden Prairie

Date: April 9, 2025

Re: LMRWD Water Resources Restoration Fund Review for (1) City of Shakopee, Water Quality Best Management Practice (BMP) – Riverbank Stabilization Project and (2) City of Eden Prairie, Eden Prairie’s Low Salt City Center

Summary

At the November 6, 2024, LMRWD Board Meeting, the LMRWD Board of Managers approved the Water Resources Restoration Fund (WRRF) work plan. The goal of the WRRF is to help fund projects sponsored by local government units (LGUs) that align with the LMRWD’s work to reduce urban nonpoint source pollution, improve and protect groundwater quality, and promote surveys and studies of wetland (fen) health management. The WRRF application materials were distributed to LGU partners after the municipal coordination meetings on January 7, 2025. The deadline for the WRRF application was February 28, 2025.

The LMRWD received two (2) applications on February 28, 2025, from the City of Eden Prairie and the City of Shakopee for projects. Young Environmental reviewed the projects in line with the previously developed and Board-approved evaluation form (Attachment 1). This memo summarizes Young Environmental’s funding evaluation of the City of Shakopee’s Water Quality BMP WRRF Application (Attachment 2) and the City of Eden Prairie’s Low Salt City Center WRRF Application (Attachment 3).

City of Shakopee Application

The City of Shakopee is requesting funding from the LMRWD for a water quality BMP. This water quality BMP was identified in the Shakopee Downtown BMP Study. The Shakopee Downtown BMP Study was a District-sponsored Watershed Based Implementation Funded (WBIF) project and the information is available upon request. The project is part of the Northwest Shakopee Stormwater BMP Retrofit project initiative, which aims to provide treatment to reduce urban nonpoint source pollution to the downtown Shakopee area. Currently, this area has little treatment and discharges directly to the Minnesota River. Implementation is planned in coordination with the overall Minnesota Riverbank Stabilization project. The [Minnesota Riverbank Stabilization project](#) is a City of Shakopee Project that aims to reduce flooding and erosion risk to critical City of Shakopee Infrastructure and significant cultural resources along the Minnesota Riverbank.

The Water Quality BMP Project is located at 150 Fillmore Street North, Shakopee, MN 55379. This is the Huber Park Area, which is publicly accessible (Attachment 2, Page 7–Project Location Map). The contributing watershed is 257 acres and approximately 2/3 of the watershed currently has no treatment. The Water Quality BMP Project elements will provide pollutant removal benefit above and beyond what would be required alone by the Riverbank Stabilization project. The project includes a diversion structure, grit chamber/prereatment, pond area, outlet structure, and restoration.

The estimated cost for the stabilization project is \$689,448 (Attachment 2).

Design and permitting continue in 2025 with construction planned for 2026.

The City of Shakopee is requesting \$100,000 from the WRRF, which is 14.5% of the estimated total cost of the water quality BMP project.

City of Eden Prairie Application

The City of Eden Prairie is requesting funding from the LMRWD for the Eden Prairie Low Salt City Center (Low Salt City Center) project. The project aims to transform the Eden Prairie City Center parking lot into a model for low salt design through the practical application of low salt design principles, including decreased impervious surfaces and reduced meltwater footprint.

The Low Salt City Center project is located at 8080 Mitchell Road, Eden Prairie, MN 55344 (Attachment 3, Page 7–Project Location Map). The Low Salt City Center Project proposes to directly reduce chloride pollution to Purgatory Creek by 16,260 pounds per year (32%) by reducing impervious surfaces and adding new snow storage areas. The additional incorporation of a bioretention (infiltration) stormwater BMP will also reduce stormwater volume, total suspended sediment (TSS), and total phosphorous (TP) discharging to Purgatory Creek. The proposed infiltration basin will have a capacity of 10,300 cubic feet, with the ability to treat up to 1.1 inches over 2.6 acres of impervious surfaces. The project proposes reconstruction of 0.45 acres of impervious surfaces routed to the infiltration basin allowing the basin to treat the current proposed project. The basin is oversized as the City of Eden Prairie would like to create excess treatment to allow for future improvements. Once the basin is utilized at full capacity, TP and TSS will be reduced by 22% for the entire 25.8-acre watershed. The proposed bioretention basin was modeled using Minimal Impact Design Standards (MIDS). The supporting MIDS calculator was submitted and reviewed.

The project is not within the LMRWD jurisdictional boundary; however, it discharges to a creek that ultimately discharges to the Minnesota River and will reduce chloride pollution to a high-risk water body according to the Minnesota Pollution Control Agency (MPCA) [Minnesota's Chloride Conditions Map](#). Chloride pollution is an ongoing issue of concern for the State of Minnesota and the LMRWD.

The estimated cost of the project is \$739,400 (Attachment 3). The project has additional partners including collaboration between the City of Eden Prairie's three watershed districts, lake associations, and Friends of the Eden Prairie Parks. The applicant has received \$425,000 from the MPCA and \$100,000 from Riley Purgatory Bluff Creek Watershed District (RPBCWD).

The current project schedule is 2025–fall 2026 for design and construction administration; followed by project construction, including installation of education components, to be completed in spring 2026–June 2028. The MPCA funds must be spent by the end of 2028.

The City of Eden Prairie is requesting \$100,000 from the WRRF, which is 13.5 % of the estimated total costs of the Low Salt City Center Project.

Evaluation

Table 1 shows the scoring of the projects based on alignment with the goals, policies, and strategies of the LMRWD 2018-2027 Watershed Management Plan (WMP).

Table 1: WRRF Applications Request Scoring for Shakopee Water Quality BMP Project and Eden Prairie Low Salt City Center Project

Scoring Metric	City of Shakopee Scoring Comments	Shakopee Project Score	City of Eden Prairie Scoring Comments	Eden Prairie Project Score	Points Available
1. Project Type	The Water Quality BMP Project addresses goals within the City's Capital Improvement Plan (CIP) 2025-2029 as the Riverbank Stabilization Project on page 24. The water quality BMP is part of the City's initiative to implement BMPs from the Northwest Shakopee Stormwater BMP retrofit project in the City's Surface Water Management Plan and is a direct tributary to the Minnesota River. Maximum points were awarded	24	The Low Salt City Center Project does not discharge directly to a MPCA-listed impaired water; however, the project addresses issues and goals within the City's comprehensive plan and Surface Water Management Plan.	9	24
2. LMRWD WMP Goals Addressed	<ul style="list-style-type: none"> • Goal 2: Surface Water Management • Goal 4: Unique Resource Management 	2	<ul style="list-style-type: none"> • Goal 2: Surface Water Management • Goal 3: Groundwater Management • Goal 4: Unique Resource Management • Goal 9: Public Education and Outreach 	4	9
3. Water Capture	Because of site conditions (soil and bedrock) the Water Quality BMP Project is not planned to be a volume management BMP.	0	Captures 1.1 inches of runoff over the impervious area routed to the proposed infiltration BMPs. Maximum points were awarded.	7	7
4. Pollutant Management	25% reduction in TSS and 15% reduction in TP.	5	32% reduction in chloride use. TP and TSS will be reduced 22% when the basin is utilized at full capacity.	5	7

Scoring Metric	City of Shakopee Scoring Comments	Shakopee Project Score	City of Eden Prairie Scoring Comments	Eden Prairie Project Score	Points Available
5. Habitat Restoration	This Water Quality BMP Project provides a secondary benefit to habitat by seeding the disturbed areas with native seed mixtures that provide food and habitat for wildlife.	3	This Low Salt City Center Project is still under design. No habitat benefits provided.	0	7
6. Bank Stabilization	Not applicable.	0	Not applicable.	0	7
7. Watershed Benefits	The Water Quality BMP Project location discharges to directly to the Minnesota River and will provide treatment to Downtown Shakopee, which is previously a largely untreated watershed area. Maximum points were awarded.	7	The Low Salt City Center Project location discharges to storm sewer. If the project discharged directly to the Creek, the watershed benefits score would be higher.	3	7
8. Partnership Opportunities	The Water Quality BMP Project has provided funding details and intends to contribute the remaining funds to implement the project. Maximum points were awarded.	7	The City intends to partner with many agencies for the project, including MPCA, RPBCWD, Lake Riley Improvement Association, etc. Maximum points were awarded.	7	7
9. Public Education	The Water Quality BMP Project is located on a public park. Public education is not incorporated but the project team is considering public education water quality signage.	3	The Project will provide principles for chloride reduction and provide a built example of low salt design, incorporating educational signage and materials. Maximum points were awarded	7	7
Total Score	Shakopee	51	Eden Prairie	42	82

Project Scoring

Based on the presented information, the City of Shakopee Water Quality BMP received a score of 51 points out of a maximum of 82 points, placing it in the moderate-to-high priority category for the LMRWD (Attachment 1, Table 1). This category qualifies the project for partial funding.

The City of Eden Prairie Low Salt City Center Project received a score of 42 points out of a maximum of 82 points, placing it in the moderate-to-high priority category for the LMRWD (Attachment 1, Table 1). This category qualifies the project for partial funding. The City of Eden Prairie has also mentioned their intent to apply for additional funding next year. This request would capitalize on the \$100,000 maximum. Because funding this cycle would be used for design and planning of the project while next year the application will focus on construction, the grant request will be considered based on the \$64,800 engineering and design cost, not the total project cost, because the design is ongoing with construction planned for 2026–2027 (Attachment 3, Page 10).

Funding Recommendations

The projects address goals in both the LMRWD 2018-2027 WMP as well as the cities' surface water management plans. Furthermore, both projects follow the LMRWD's strategy of partnering with LGUs to leverage financial resources and improve natural resources within the LMRWD boundaries.

Based on the scoring and the fact that there are two moderate-to-high priority project applications for funding recommendation, we recommend contributing up to \$90,280 (approximately 13% of the project cost [lesser of the awarded project cost or engineers cost estimate]) for the City of Shakopee, Water Quality BMP – Riverbank Stabilization Project. However, the final contributed dollar amount will be based on the awarded construction contract and will be up to a maximum of \$90,280.

Before funds can be released, the following information is required for the City of Shakopee project:

- Documentation that the project meets the permitting requirements of the LMRWD and other regulatory agencies.
- Final signed construction plans and specifications.
- Awarded contract and bid information.
- Executed LMRWD grant and maintenance agreement or resolution.
- Agreement that payments from the LMRWD are reimbursement-based and require receipts of paid invoices as well as a summary of the work completed as part of the receipt/invoice.

The Low Salt City Center Project can proceed with less than the requested funding amount of \$100,000 and plans to seek additional funding next year. We recommend contributing up to \$9,720 (15%) of the project's engineering design cost estimate of \$64,800 for the City of Eden Prairie's Low Salt City Center Project. This would help the City of Eden Prairie meet their required project fund match dollar amount.

The following information is required for the City of Eden Prairie project:

- Executed LMRWD grant agreement or resolution.
- Agreement that payments from the LMRWD are reimbursement-based and require receipts of paid invoices as well as a summary of the work completed as part of the receipt/invoice.

Attachments

- Attachment 1—LMRWD Funding Request Evaluation
- Attachment 2— City of Shakopee Water Quality BMP WRRF Application
- Attachment 3—City of Eden Prairie Low Salt City Center WRRF Application

Attachment 1—Funding Request Evaluation

Funding Request Evaluation

LMRWD continues to receive inquiries from municipalities and other partners for project funding support. Historically, because the requests were infrequent and appeared to compete with other requests or priorities, the decision to provide financial assistance was not supported by documented criteria nor scoring. Recently, with the request from the City of Carver for the levee project, Young Environmental developed the following scoring system, which was applied to this request.

The goal of the scoring system is to establish impartial and fair evaluations for all District funding requests based on the project's alignment with the goals, policies, and strategies of the LMRWD Watershed Management Plan. Projects are scored on nine different metrics, detailed below, for a possible 82 points.

- 1. Project Type (Maximum 24 points):** The Project Type Score considers whether a proposed project is tributary to an impaired waterway, if it solves an issue previously identified by the community or LMRWD plans, and whether the project is explicitly included in the community or LMRWD plans. Points are awarded based on how well the project aligns with the community or LMRWD plans.
- 2. Plan Goals (Maximum 9 points):** The Plan Goals Score gives credit depending on how well-aligned a proposed project is with the goals of the LMRWD Watershed Plan. Projects are assigned a score of 0 through 9 based on how many of the LMRD's goals are addressed.
- 3. Water Capture (Maximum 7 points):** The Water Capture Score gives credit to projects that meet or exceed the standards for stormwater runoff volume management. Projects are assigned a score of 0 to 7 based on the amount of volume reduction that the proposed project provides.
- 4. Pollutant Management (Maximum 7 points):** The Pollutant Management Score gives credit to projects that meet or exceed the amount of water quality treatment provided beyond what is required for regulatory purposes. Projects without a pollutant reduction component will receive a score of 0, whereas those that reduce pollutant loading to downstream resources can receive a score of up to 7.
- 5. Habitat Restoration (Maximum 7 points):** The Habitat Restoration Score gives credit to projects that provide habitat benefits. Projects with no habitat benefit receive a score of 0. Projects likely to achieve habitat benefits as a secondary project benefit receive a score of 3. Projects that include a replacement of the existing habitat with an improved habitat receive a score of 5. Projects that include habitat creation or enhancement as the primary purpose of the project receive a score of 7.

- 6. Bank Stabilization (Maximum 7 points):** The Bank Stabilization Score gives credit to projects that restore or stabilize degraded gullies, streambanks or shorelines. A project is assigned a bank stabilization score based on the length of the gully, streambank, or shoreline restored or stabilized and the level of existing degradation. This metric is only applied to projects with a designed restoration component (versus indirect benefits). Projects without a designed bank or shoreline restoration component are assigned a score of 0.
- 7. Watershed Benefits (Maximum 7 points):** The Watershed Benefits Score gives credit to projects that provide benefits beyond the immediate site location. Scores are based on where the proposed project is located within the watershed, giving greater weight to those near headwaters.
- 8. Partnership Opportunities (Maximum 7 points):** The Partnership Opportunity Score gives credit to projects that allow the LMRWD to partner with other organizations. The LMRWD is interested in being a project partner with its member communities. A project receives the maximum score of 7 if one or more of the partners is a financial contributor to the project.
- 9. Public Education (Maximum 7 points):** The Public Education Score gives credit to projects that spread awareness of the LMRWD's projects and their benefits to the public. The score is based on the accessibility of the final project, giving the greatest weight to those on public lands with public access.

Using the total points scored, projects fit in one of four priority categories (e.g., low, low-to-moderate, moderate-to-high, high), as shown in Table 1.

Table 1. LMRWD Funding Request Scoring Priority

Project Score	Priority	Recommended Action
0–19	Low	Do not recommend funding requests at this time; additional information may be needed to evaluate the potential project more fully.
20–40	Low-to-Moderate	Work with project sponsors to incorporate more District goals, policies, or strategies.
41–61	Moderate-to-High	Consider partial funding requests, with funding amount and design components that align with District priorities.
62–82	High	Recommend full funding request as presented.



LOWER MINNESOTA RIVER
WATERSHED DISTRICT

Lower Minnesota River Watershed District (LMRWD) Water Resources Restoration Fund Application

Fill out the project application. The following information is required for all projects.

Project Information	
Project Name:	Water Quality BMP - Riverbank Stabilization Project
Address/Cross Streets:	150 Fillmore St N, Shakopee, MN 55379 (Located at Huber Park Area)
Property Owner Name:	City of Shakopee
City:	Shakopee
County:	Scott
Project Contact Name:	Kirby Templin
Project Contact Phone:	952-233-9372
Project Contact Email:	KTemplin@shakopeemn.gov
Land Access:	<input type="checkbox"/> Private Access Only <input type="checkbox"/> Partially Private Access <input type="checkbox"/> Partially Public Access <input checked="" type="checkbox"/> Public Access
Describe Access Location:	Access is available through Huber Park or along Bluff Avenue East.
Attach access map showing: <ul style="list-style-type: none"> Public versus private land Limits of disturbance Property lines and property ownership Right-of-way (ROW) and access information <div style="text-align: right; font-size: small;">This information is available in the attached project location map.</div>	
Attach project map showing: <ul style="list-style-type: none"> Project location Project features Watershed boundary (if applicable) Waterbodies to which the project drains Calcareous fens (if applicable) Trout streams (if applicable) Minnesota Pollution Control Agency (MPCA) Impaired Waters (if applicable) <div style="text-align: right; font-size: small;">This information is available in the attached project location map and the additional supporting figures from the feasibility study.</div>	
List Project Partners:	<p>City of Shakopee - Primary funding source for water quality BMP project element.</p> <p>Lower Minnesota River Watershed District - \$100,000 - Cost Share Partner for Gully/Riverbank Stabilization elements of the project.</p> <p>Watershed Based Implementation Funding - \$149,297 - Money was allocated from both the LMRWD and Scott WMO Planning Metro WBIF areas. Grant money received for construction costs of the water quality improvements associated with the Minnesota River Riverbank Stabilization Project.</p>

What is the proposed project schedule? (Estimated schedule is acceptable. Please indicate the finality of the schedule. For construction projects, at a minimum, provide the estimated bid opening date, construction start date, and length of anticipated construction.) Describe factors that may affect your anticipated schedule, if any.

Various elements of the project are in design and permitting. Preliminary concept level planning for the water quality improvements have been considered in relation to other project elements that are in design, however, the design of the water quality improvements has not occurred yet. Design and permitting continue in 2025 with construction planned for 2026.

Provide a project narrative informing the LMRWD how the project addresses similar goals of the LMRWD Watershed Management Plan ([Watershed Management Plan, Section 3: Goals, Policies, and Strategies](#)). Address how the project meets of the goals of the local governmental unit's (LGU) surface water management plan. Describe the goals, need, size, and quantifiable benefits of the project. Project narratives should include a summary of existing and proposed conditions. Reference attachments as necessary.

This project was identified in the Shakopee Downtown BMP Study that was completed with WBIF funds and partnership with LMRWD. This water quality BMP is part of the NW Shakopee Stormwater BMP Retrofit project initiative to provide treatment to reduce urban nonpoint source pollution to the Downtown Shakopee area which has little to no treatment and discharges directly to the Minnesota River (Previous projects in this initiative include the Scott County Parking Lot A BMP project, Lewis and 2nd Avenue Parking Lot BMP). A feasibility study identified a project opportunity at this location, and implementation is planned in coordination with the overall Minnesota Riverbank Stabilization project. The project will divert low flows from Watershed/Pipeshed S to provide treatment in a pond to allow for settling of sediment to remove TSS and TP. The contributing Watershed/Pipeshed S is 257.3 acres (approximately 2/3 of the watershed currently has no treatment). There is an existing BMP at Huber Park that provides treatment to Watershed/Pipeshed Q which is 53.4 acres that treatment will be consolidated and enhanced with the new proposed BMP. The water quality BMP project element will provide benefit above and beyond what would be required by the Riverbank Stabilization project by itself. This project provides benefits to a larger watershed (approximately 250+acres) outside of the direct project site. The project includes a diversion structure, grit chamber/pretreatment, pond area, outlet structure, restoration, etc. The water quality BMP project element will provide benefit above and beyond what would be required by the Riverbank Stabilization project by itself. This project provides benefits to a larger watershed (approximately 250+acres) outside of the direct project site. This project addresses LMRWD goals including Issue 3 Water Quality and Goal 2 Surface Water Management. One of the district strategies to address this issue and goal is strategy 2.2.3 cost share incentive program for implementation projects. Attached are figures and summary information from the feasibility study that provides more information on the BMP and contributing watershed.

Funding	
Funding Amount Request from LMRWD (up to 25% of total cost):	\$ \$100,000.00
Matching Funds from applicant and additional partners	Applicant Contribution \$ \$440,151.00
	\$ WBIF \$149,297.00
	\$
	\$
Total Project Cost (attach engineer's cost estimate if project has not yet been bid or fee estimate if your project is not a construction project)	\$ \$689,447.85
Attach cost/fee estimate or bidded construction cost Cost Estimate is Attached	
Is the project in the LMRWD Watershed Management Plan Capital Improvement Projects Section (pg. 188/259 of the Watershed Management Plan)?	<input checked="" type="checkbox"/> Yes (If Yes, what is the name of the project as identified in the Plan?): Shakopee Riverbank Stabilization Project <input type="checkbox"/> No
Is the project included in the LGU Local Comprehensive Plan or LGU Surface Water Management Plan (SWMP)?	<input checked="" type="checkbox"/> Local Comprehensive Plan Location (Section and Page No.): The project is included in the City of Shakopee CIP 2025-2029 as the Riverbank Stabilization Project on Page 24. <input checked="" type="checkbox"/> SWMP Location (Section and Page No.): The water quality BMP is part of the project initiative to implement BMPs in the "NW Shakopee Storm Water BMP Retrofit" project. Listed in Section VI Table 6.1 on pdf page 50
What waterbody(s) does your project drain to?	Name(s): Minnesota River
Are any of these waterbodies an MPCA listed impaired water, designated trout stream, calcareous fen, or Minnesota Department of Natural Resources (DNR)-Protected wetland? Minnesota Impaired Waters List	<input checked="" type="checkbox"/> Yes (If Yes, Name/s): Minnesota River - 07020012-506 (Nutrients and Turbidity) <input type="checkbox"/> No
What issues does the project address within the LGU Local Comprehensive Plan or SWMP?	<p>For this specific project request, the water quality BMP associated with the Minnesota Riverbank stabilization project is to address water quality (TP and TSS - Nutrients and Turbidity) to the Minnesota River. This BMP is part of the NW Shakopee Stormwater BMP Retrofit project initiative to provide treatment to reduce urban nonpoint source pollution to the Downtown Shakopee area which has little to no treatment and discharges directly to the Minnesota River (Previous projects in this initiative include the Scott County Parking Lot A BMP project, Lewis and 2nd Avenue Parking Lot BMP project). A feasibility study identified a project opportunity at this location, and implementation is planned in coordination with the overall Minnesota Riverbank Stabilization project.</p> <p>There is riverbank stabilization with this project, however, that is a different project element that the LMRWD has already partnered with cost share of \$100,000 for gully/riverbank stabilization.</p>

Please fill out the rest of the application form as it applies to your project.

The following sections may not apply to all projects.

If a section does not apply, please select not applicable (N/A).

Stormwater Volume Control	
Does your project propose any volume control or reduction of stormwater runoff?	<input type="checkbox"/> Yes <input checked="" type="checkbox"/> N/A
If yes, what is the estimated total volume reduction? (Ensure your project narrative describes method of stormwater volume control)	Based on soils and bedrock information in the project area, it is not anticipated that infiltration will be feasible for this project. The water quality BMP is planned to not be a volume management BMP.

Pollutant Management											
Does your project propose pollutant management to prevent impairment or protect downstream resources?	<input checked="" type="checkbox"/> Yes <input type="checkbox"/> N/A										
Is the downstream resource impaired for any pollutants? Minnesota's Impaired Waters List	<input checked="" type="checkbox"/> Yes (If yes, list the impairments): Minnesota River - 07020012-506 (Nutrients and Turbidity) <input type="checkbox"/> No										
What are the pollutants targeted and their percent reduction because of the project? (Ensure that your project narrative describes the method of pollutant management)	<table border="1"> <thead> <tr> <th>Pollutant</th> <th>Percent Reduction</th> </tr> </thead> <tbody> <tr> <td>TSS</td> <td>25% Reduction (10,000 lbs per year)</td> </tr> <tr> <td>TP</td> <td>15% Reduction (20 lbs per year)</td> </tr> <tr> <td> </td> <td> </td> </tr> <tr> <td> </td> <td> </td> </tr> </tbody> </table>	Pollutant	Percent Reduction	TSS	25% Reduction (10,000 lbs per year)	TP	15% Reduction (20 lbs per year)				
Pollutant	Percent Reduction										
TSS	25% Reduction (10,000 lbs per year)										
TP	15% Reduction (20 lbs per year)										

Brief Description of Habitat Restoration Benefits
<p>Please provide a brief description (500 words or less) about how the proposed project provides habitat benefit (i.e. increase in native plantings, removing dams, aquatic connectivity, riparian restoration, wetland restoration, forest management). If project is in a stream or river, please provide the MPCA Stream Habitat Assessment (MSHA) score (or other stream habitat assessment), documentation, and photos (if applicable).</p> <p>The project will have a native planting buffer around the water quality BMP. The water quality BMP will be a pond with standing open water that will also have wildlife benefits. The water quality benefits from the BMP will benefit/improve the habitat of the Minnesota River.</p>

Streambank Stabilization	
Is there a designed streambank restoration component of the project?	<input type="checkbox"/> Yes If Yes, what is the proposed length to be stabilized: <hr/> <input checked="" type="checkbox"/> N/A LMRWD is already a partner with cost share of \$100,000 for the riverbank/gully stabilization component of the Shakopee Riverbank Stabilization Project.
Has the current bank stability been evaluated? (i.e. Bank Erosion Hazard Index, MPCA Channel Condition and Stability Index, Minnesota Department of Transportation (MnDOT) HydInfra, etc.) Please attach supporting documentation.	<input type="checkbox"/> Yes <input type="checkbox"/> No <div style="text-align: center;">NA</div>
What is the current streambank stability? Please attach supporting documentation and photos.	<input type="checkbox"/> Very Stable <input type="checkbox"/> Stable <input type="checkbox"/> Moderately Unstable <input type="checkbox"/> Unstable <div style="text-align: center;">NA</div>
Permitting	
Does the project trigger any LMRWD Rules (if applicable)?	<input checked="" type="checkbox"/> Rule B: Erosion and Sediment Control <input checked="" type="checkbox"/> Rule C: Floodplain and Drainage Alteration <input checked="" type="checkbox"/> Rule D: Stormwater Management: <input type="checkbox"/> Rule F: Steep Slopes <input type="checkbox"/> N/A
If the project triggers LMRWD Rules, summarize how the project intends to comply with the Rules (i.e. stormwater management).	<p>The project is located within the floodplain of the Minnesota River. The project will work with LMRWD to get a permit for this work and demonstrate that it meets requirements.</p> <p>The project will trigger the Erosion and Sediment Control rule. The city of Shakopee is the LGU for this rule, however, if LMRWD decides to permit for this work, the city will demonstrate it meets the requirements. The project will obtain necessary NPDES Construction Stormwater permit and include a SWPPP and erosion control plan with the project construction plans. The city will complete inspections in compliance with the NPDES Construction Stormwater Permit.</p> <p>The project will trigger the Stormwater Management rule. The city of Shakopee is the LGU for this rule, however, if LMRWD decides to permit for this work, the city will demonstrate it meets the requirements. The project will develop a stormwater management plan that demonstrates the project meets stormwater requirements. The stormwater management plan will also summarize the above and beyond benefit of the proposed water quality BMP.</p>
Provide documentation of additional permitting requirements from regulatory agencies (e.g., Minnesota DNR, MPCA, and/or additional city permits). Identify which permits are required and provide their status (in-progress, obtained, etc.) Before funds are dispersed, copies of approved permits will be required; however, approval is not required for application eligibility.	
Permit	Status
MN DNR Permitting	In Progress
USACE Permitting	In Progress

Construction Plans

Attach Construction Plan Sheets
(if applicable)

Project design and permitting is in progress. Construction plans are not available. See attached for project location map and summary information from the feasibility study.



Table 2-2 Summary of Pipesheds and Existing Condition Water Quality Model Results

Pipeshed ID	Area (acres)	Percent Impervious	Percent Directly Connected Impervious	TSS Loading (lbs/yr)	TSS Removal from Existing BMPs (lbs/yr)	TSS Removal from Existing BMPs (%)	TSS Loading to Outfall (lbs/yr)	TP Loading (lbs/yr)	TP Removal from Existing BMPs (lbs/year)	TP Removal from Existing BMPs (%)	TP Loading to Outfall (lbs/yr)
A	86.8	65%	63%	35,348	4,989	14%	30,359	115	10	8%	106
B	2.5	77%	75%	1,213	0	0%	1,213	4	0	0%	4
C	2.3	16%	15%	255	0	0%	255	1	0	0%	1
D	59.9	67%	64%	24,853	2,551	10%	22,302	81	2	3%	78
E	379.2	41%	31%	78,833	15,276	19%	63,557	261	27	10%	234
F	4.5	92%	90%	2,584	4	0%	2,580	8	0	0%	8
G	0.6	45%	31%	121	18	14%	103	0	0	14%	0
H	5.7	61%	60%	2,235	2,009	90%	226	7	4	60%	3
I	6.8	99%	97%	4,234	1	0%	4,233	14	0	0%	14
J	0.3	2%	1%	7	0	0%	7	0	0	0%	0
K	3.8	60%	55%	1,363	74	6%	1,289	4	0	4%	4
L	3.6	73%	65%	1,532	182	12%	1,350	5	0	5%	5
M	2.8	74%	61%	1,126	101	9%	1,025	4	0	8%	3
N	254.3	48%	33%	55,824	15,775	28%	40,049	184	36	20%	148
O	7.3	89%	74%	3,476	392	11%	3,084	11	1	5%	11
P	6.3	95%	85%	3,454	588	17%	2,866	11	1	5%	11
Q	53.4	55%	41%	14,592	8,651	59%	5,941	48	18	37%	30
R	9.2	16%	11%	769	645	84%	124	3	1	29%	2
S	249.7	45%	30%	51,448	11,655	23%	39,793	170	30	17%	141
T	7.2	51%	41%	1,980	162	8%	1,818	7	1	8%	6
U	2.6	30%	22%	395	38	10%	357	1	0	10%	1
V	8.5	63%	57%	3,189	2,885	91%	304	10	6	61%	4
W	200.7	56%	45%	59,168	8,945	15%	50,223	194	19	10%	175
X	0.8	11%	8%	53	48	90%	5	0	0	60%	0
TOTAL	1,359	50%	39%	348,052	74,989	22%	273,063	1,143	156	13%	989

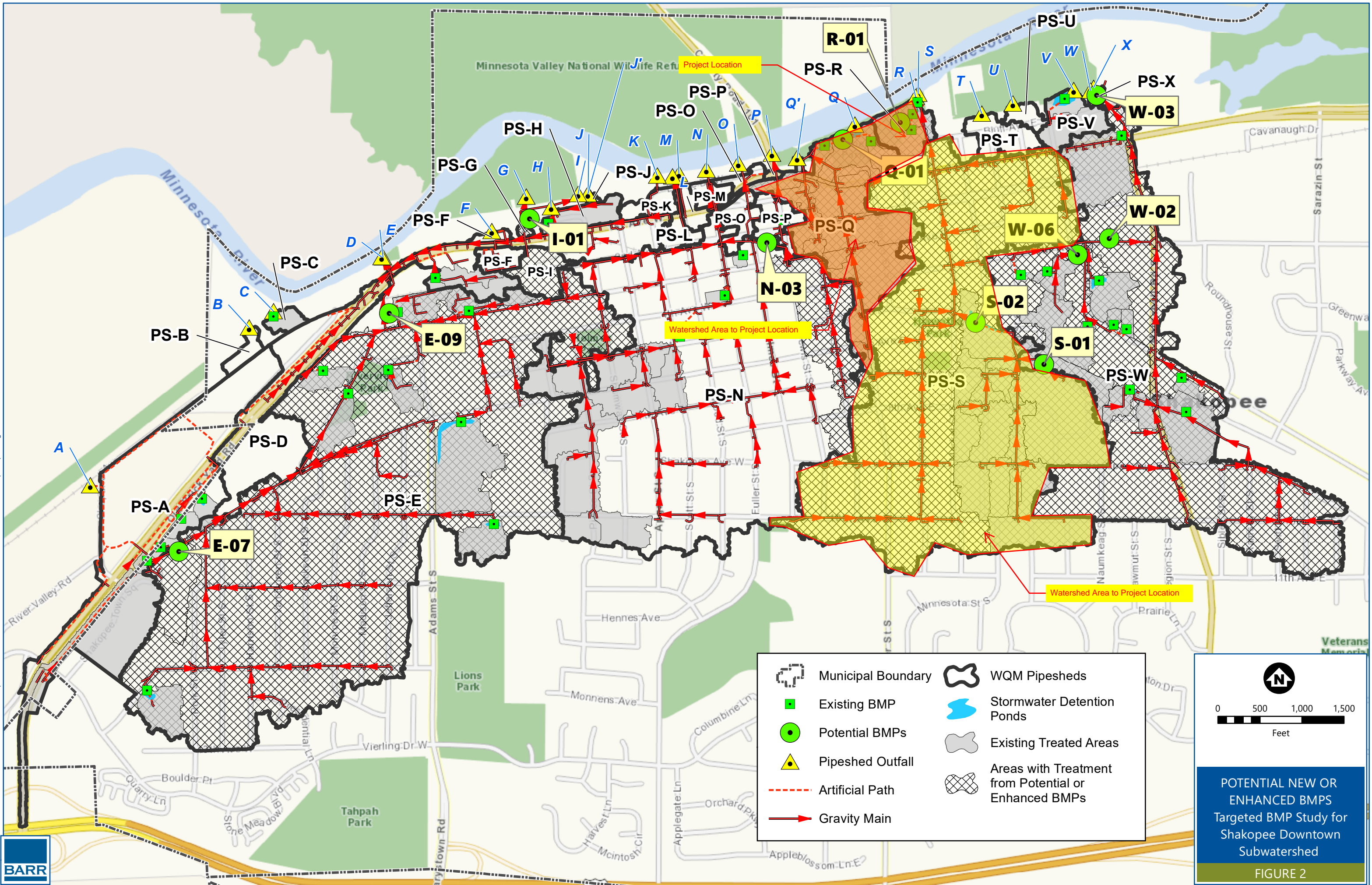
Table 3-1 Summary of Potential BMP Performance and Planning Level Costs

BMP ID	Drainage Area (acre)	TSS Loading (lbs/yr)	TSS Removal (lbs/yr)	TSS Removal (%)	TP Loading (lbs/yr)	TP Removal (lbs/yr)	TP Removal (%)	Planning Level Cost Estimate	Annualized Benefit-Cost (\$/lb-TSS/yr)	Annualized Benefit-Cost (\$/lb-TP/yr)
E-07	10.3	3,074	2,767	90%	10.3	6.2	60%	\$751,000	\$19.98	\$8,915
E-09	372.8	61,934	35,055	57%	228.2	72.1	32%	\$1,826,000	\$3.83	\$1,864
G-01	0.6	103	102	99%	0.3	0.3	100%	\$49,000	\$35.36	\$12,021
I-01	7.4	4,530	2,598	57%	14.7	4.8	33%	\$411,000	\$11.64	\$6,302
N-03a	26.4	4,656	2,793	60%	18.4	4.6	25%	\$2,014,000	\$53.07	\$32,224
N-03b	26.4	4,656	4,561	98%	18.4	18	98%	\$1,939,000	\$31.29	\$7,928
Q-01a ¹	54.8	12,283	5,145	42%	43.5	14.22	33%	\$416,000	\$5.95	\$2,153
Q-01b ¹	54.8	12,283	4,530	37%	43.5	8.62	20%	\$715,000	\$11.62	\$6,105
R-01a	257.3	40,489	22,163	55%	143.0	41.9	29%	\$184,000	\$0.61	\$323
R-01b	257.3	40,216	34,064	85%	142.2	73.4	52%	\$2,639,000	\$5.70	\$2,646
S-01a ¹	23.0	2,932	880	30%	10.0	2.58	26%	\$180,000	\$15.05	\$5,135
S-01b ¹	23.0	2,932	733	25%	10.0	1.29	13%	\$244,000	\$24.50	\$13,921
S-02a ¹	80.3	10,944	2,295	21%	39.5	4.38	11%	\$594,000	\$19.05	\$9,981
S-02b ¹	80.3	10,944	5,031	46%	39.5	6.28	16%	\$1,185,000	\$17.34	\$13,888
W-02	56.4	10,998	5,415	49%	47.6	14.1	30%	\$1,090,000	\$14.82	\$5,690
W-03 ¹	201.5	49,365	3,796	8%	180.2	7.99	4%	\$276,000	\$5.35	\$2,542
W-06 ¹	14.0	3,531	0	0%	11.7	3.9	33%	\$488,000	N/A	\$9,209

¹ For sites with existing BMPs, removals and annualized benefit-costs are reported as the difference between existing conditions and proposed conditions.

Scaled Removal Estimates based on Barr Study and Estimates. The actual project will be approximately 30% of R-01b.

Estimated Load Reductions.
TSS, 10,000 lbs per year (25% reduction)
TP, 20 lbs per year (15% Reduction)



Barr Footer: ArcGIS 10.8.1, 2022-02-04 10:47 File: I:\Client\Shakopee MN\Work Orders\23701094 Assessment Downtown BMPs\Map\Report\R-01.mxd User: EMA

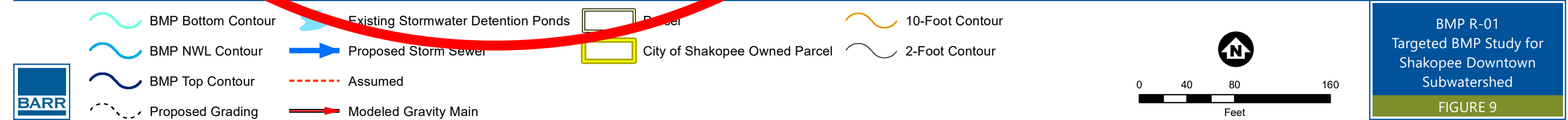
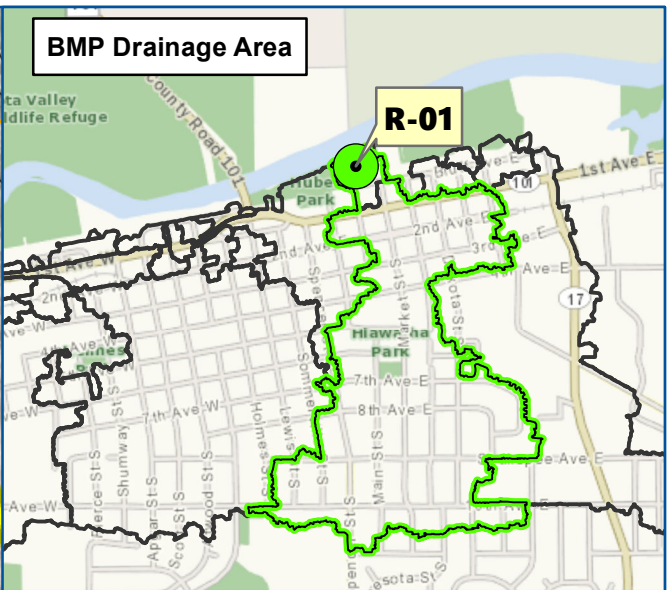
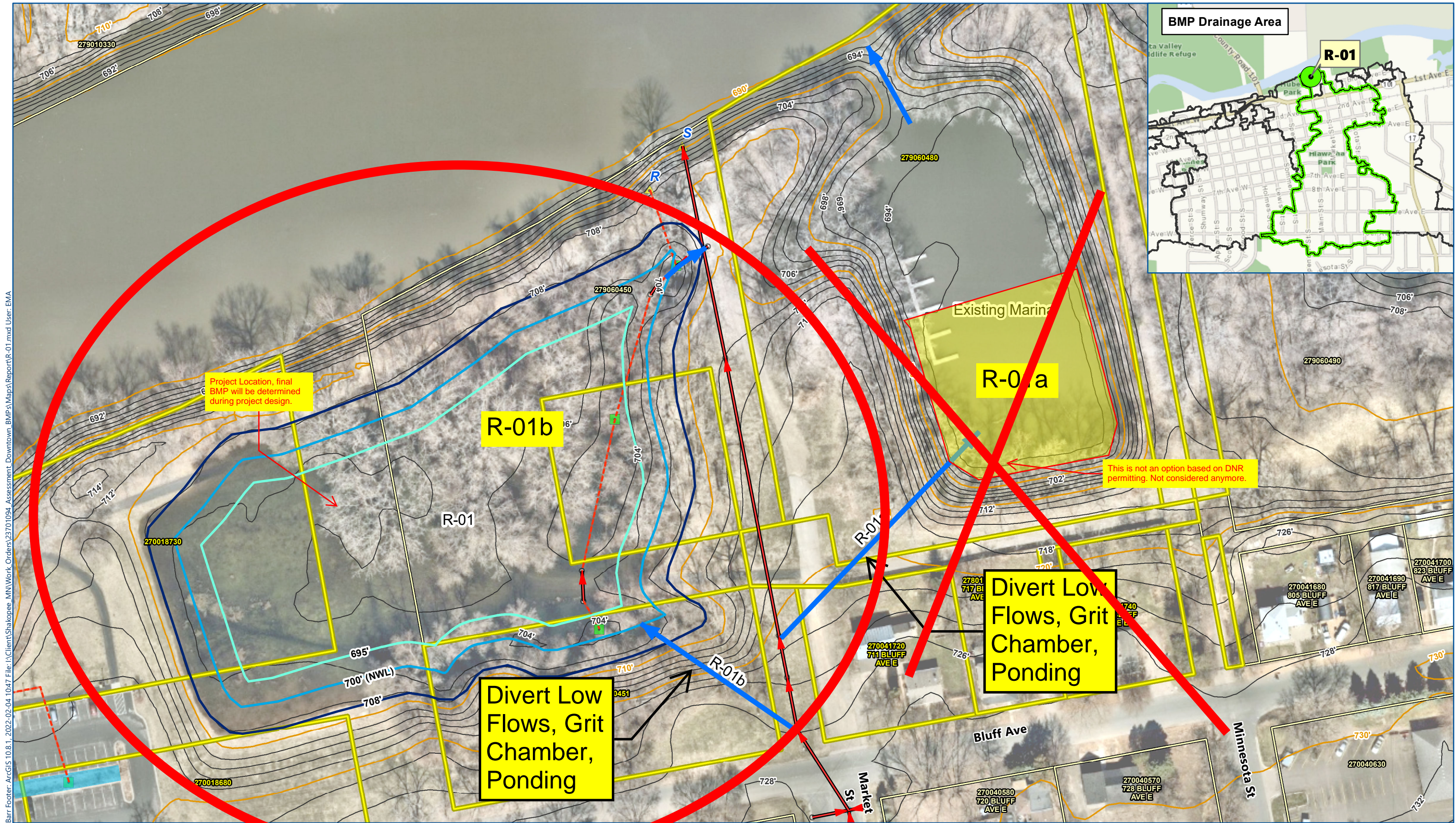


Table: Engineer's Opinion of Probable Project Cost

BARR		PREPARED BY: BARR ENGINEERING COMPANY																																																																																																																																																																																																																																																																																																																																																																																																																																																																																																																																																																																																																																																																																																																																																																																																																																																																																																																																																																																																																																																																																																																																																																																																																																																																																																																																																																																																																	
------	--	---------------------------------------	--	--	--	--	--	--	--	--	--	--	--	--	--	--	--	--	--	--	--	--	--	--	--	--	--	--	--	--	--	--	--	--	--	--	--	--	--	--	--	--	--	--	--	--	--	--	--	--	--	--	--	--	--	--	--	--	--	--	--	--	--	--	--	--	--	--	--	--	--	--	--	--	--	--	--	--	--	--	--	--	--	--	--	--	--	--	--	--	--	--	--	--	--	--	--	--	--	--	--	--	--	--	--	--	--	--	--	--	--	--	--	--	--	--	--	--	--	--	--	--	--	--	--	--	--	--	--	--	--	--	--	--	--	--	--	--	--	--	--	--	--	--	--	--	--	--	--	--	--	--	--	--	--	--	--	--	--	--	--	--	--	--	--	--	--	--	--	--	--	--	--	--	--	--	--	--	--	--	--	--	--	--	--	--	--	--	--	--	--	--	--	--	--	--	--	--	--	--	--	--	--	--	--	--	--	--	--	--	--	--	--	--	--	--	--	--	--	--	--	--	--	--	--	--	--	--	--	--	--	--	--	--	--	--	--	--	--	--	--	--	--	--	--	--	--	--	--	--	--	--	--	--	--	--	--	--	--	--	--	--	--	--	--	--	--	--	--	--	--	--	--	--	--	--	--	--	--	--	--	--	--	--	--	--	--	--	--	--	--	--	--	--	--	--	--	--	--	--	--	--	--	--	--	--	--	--	--	--	--	--	--	--	--	--	--	--	--	--	--	--	--	--	--	--	--	--	--	--	--	--	--	--	--	--	--	--	--	--	--	--	--	--	--	--	--	--	--	--	--	--	--	--	--	--	--	--	--	--	--	--	--	--	--	--	--	--	--	--	--	--	--	--	--	--	--	--	--	--	--	--	--	--	--	--	--	--	--	--	--	--	--	--	--	--	--	--	--	--	--	--	--	--	--	--	--	--	--	--	--	--	--	--	--	--	--	--	--	--	--	--	--	--	--	--	--	--	--	--	--	--	--	--	--	--	--	--	--	--	--	--	--	--	--	--	--	--	--	--	--	--	--	--	--	--	--	--	--	--	--	--	--	--	--	--	--	--	--	--	--	--	--	--	--	--	--	--	--	--	--	--	--	--	--	--	--	--	--	--	--	--	--	--	--	--	--	--	--	--	--	--	--	--	--	--	--	--	--	--	--	--	--	--	--	--	--	--	--	--	--	--	--	--	--	--	--	--	--	--	--	--	--	--	--	--	--	--	--	--	--	--	--	--	--	--	--	--	--	--	--	--	--	--	--	--	--	--	--	--	--	--	--	--	--	--	--	--	--	--	--	--	--	--	--	--	--	--	--	--	--	--	--	--	--	--	--	--	--	--	--	--	--	--	--	--	--	--	--	--	--	--	--	--	--	--	--	--	--	--	--	--	--	--	--	--	--	--	--	--	--	--	--	--	--	--	--	--	--	--	--	--	--	--	--	--	--	--	--	--	--	--	--	--	--	--	--	--	--	--	--	--	--	--	--	--	--	--	--	--	--	--	--	--	--	--	--	--	--	--	--	--	--	--	--	--	--	--	--	--	--	--	--	--	--	--	--	--	--	--	--	--	--	--	--	--	--	--	--	--	--	--	--	--	--	--	--	--	--	--	--	--	--	--	--	--	--	--	--	--	--	--	--	--	--	--	--	--	--	--	--	--	--	--	--	--	--	--	--	--	--	--	--	--	--	--	--	--	--	--	--	--	--	--	--	--	--	--	--	--	--	--	--	--	--	--	--	--	--	--	--	--	--	--	--	--	--	--	--	--	--	--	--	--	--	--	--	--	--	--	--	--	--	--	--	--	--	--	--	--	--	--	--	--	--	--	--	--	--	--	--	--	--	--	--	--	--	--	--	--	--	--	--	--	--	--	--	--	--	--	--	--	--	--	--	--	--	--	--	--	--	--	--	--	--	--	--	--	--	--	--	--	--	--	--	--	--	--	--	--	--	--	--	--	--	--	--	--	--	--	--	--	--	--	--	--	--	--	--	--	--	--	--	--	--	--	--	--	--	--	--	--	--	--	--	--	--	--	--	--	--	--	--	--	--	--	--	--	--	--	--	--	--	--	--	--	--	--	--	--	--	--	--	--	--	--	--	--	--	--	--	--	--	--	--	--	--	--	--	--	--	--	--	--	--	--	--	--	--	--	--	--	--	--	--	--	--	--	--	--	--	--	--	--	--	--	--	--	--	--	--	--	--	--	--	--	--	--	--	--	--	--	--	--	--	--	--	--	--	--	--	--	--	--	--	--	--	--	--	--	--	--	--	--	--	--	--	--	--	--	--	--	--	--	--	--	--	--	--	--	--	--	--	--	--	--	--	--	--	--	--	--	--	--	--	--	--	--	--	--	--	--	--	--	--	--	--	--	--	--	--	--	--	--	--	--	--	--	--	--	--	--	--	--	--	--	--	--	--	--	--	--	--	--	--	--	--	--	--	--	--	--	--	--	--	--	--	--	--	--	--	--	--	--	--	--	--	--	--	--	--	--	--	--	--	--	--	--	--	--	--	--	--	--	--	--	--	--	--	--	--	--	--	--	--	--	--	--	--	--	--	--	--	--	--	--	--	--	--	--	--	--	--	--	--	--	--	--	--	--	--	--	--	--	--	--	--	--	--	--	--	--	--	--	--	--	--	--	--	--	--	--	--	--	--	--	--	--	--	--	--	--	--	--	--	--	--	--	--	--	--	--	--	--	--	--	--	--	--	--	--	--	--	--	--	--	--	--	--	--	--	--	--	--	--	--	--	--	--	--	--	--	--	--	--	--	--	--	--	--	--	--	--	--	--	--	--	--	--	--	--	--	--	--	--	--	--	--	--	--	--	--	--	--	--	--	--	--	--	--	--	--	--	--	--	--	--	--	--	--	--	--	--	--	--	--	--	--	--	--	--	--	--	--	--	--	--	--	--	--	--	--	--	--	--	--	--	--	--	--	--	--	--	--	--	--	--	--	--	--	--	--	--	--	--	--	--	--	--	--	--	--	--	--	--	--	--	--	--	--	--	--	--	--	--	--	--	--	--	--	--	--	--	--	--	--	--	--	--	--	--	--	--	--	--	--	--	--	--	--	--	--	--



LOWER MINNESOTA RIVER
WATERSHED DISTRICT

Lower Minnesota River Watershed District (LMRWD) Water Resources Restoration Fund Application

Fill out the project application. The following information is required for all projects.

Project Information	
Project Name:	
Address/Cross Streets:	
Property Owner Name:	
City:	
County:	
Project Contact Name:	
Project Contact Phone:	
Project Contact Email:	
Land Access:	<input type="checkbox"/> Private Access Only <input type="checkbox"/> Partially Private Access <input type="checkbox"/> Partially Public Access <input type="checkbox"/> Public Access
Describe Access Location:	
Attach access map showing: <ul style="list-style-type: none"> Public versus private land Limits of disturbance Property lines and property ownership Right-of-way (ROW) and access information 	
Attach project map showing: <ul style="list-style-type: none"> Project location Project features (see "Aerial - Proposed") Watershed boundary (if applicable) Waterbodies to which the project drains Calcareous fens (if applicable) Trout streams (if applicable) Minnesota Pollution Control Agency (MPCA) Impaired Waters (if applicable) 	
List Project Partners:	

What is the proposed project schedule? (Estimated schedule is acceptable. Please indicate the finality of the schedule. For construction projects, at a minimum, provide the estimated bid opening date, construction start date, and length of anticipated construction.) Describe factors that may affect your anticipated schedule, if any.

Provide a project narrative informing the LMRWD how the project addresses similar goals of the LMRWD Watershed Management Plan ([Watershed Management Plan, Section 3: Goals, Policies, and Strategies](#)). Address how the project meets of the goals of the local governmental unit's (LGU) surface water management plan. Describe the goals, need, size, and quantifiable benefits of the project. Project narratives should include a summary of existing and proposed conditions. Reference attachments as necessary.

Funding	
Funding Amount Request from LMRWD (up to 25% of total cost):	\$
Matching Funds from applicant and additional partners	Applicant Contribution \$
	\$
	\$
	\$
Total Project Cost (attach engineer's cost estimate if project has not yet been bid or fee estimate if your project is not a construction project)	\$
Attach cost/fee estimate or bidded construction cost (see "Project Cost Estimate LMRWD")	
Is the project in the LMRWD Watershed Management Plan Capital Improvement Projects Section (pg. 188/259 of the Watershed Management Plan)?	<input type="checkbox"/> Yes (If Yes, what is the name of the project as identified in the Plan?): _____
	<input type="checkbox"/> No
Is the project included in the LGU Local Comprehensive Plan or LGU Surface Water Management Plan (SWMP)?	<input type="checkbox"/> Local Comprehensive Plan Location (Section and Page No.): _____
	<input type="checkbox"/> SWMP Location (Section and Page No.): _____
What waterbody(s) does your project drain to?	Name(s): _____
Are any of these waterbodies an MPCA listed impaired water, designated trout stream, calcareous fen, or Minnesota Department of Natural Resources (DNR)-Protected wetland? Minnesota Impaired Waters List	<input type="checkbox"/> Yes (If Yes, Name/s): _____ _____
	<input type="checkbox"/> No
What issues does the project address within the LGU Local Comprehensive Plan or SWMP?	

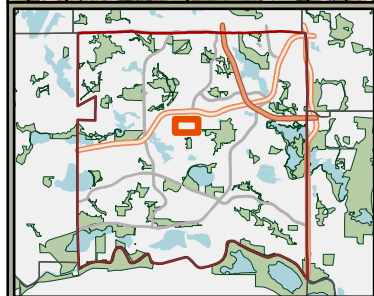
If a section does not apply, please select not applicable (N/A).

Brief Description of Habitat Restoration Benefits
Please provide a brief description (500 words or less) about how the proposed project provides habitat benefit (i.e. increase in native plantings, removing dams, aquatic connectivity, riparian restoration, wetland restoration, forest management). If project is in a stream or river, please provide the MPCA Stream Habitat Assessment (MSHA) score (or other stream habitat assessment), documentation, and photos (if applicable).

Streambank Stabilization	
Is there a designed streambank restoration component of the project?	<input type="checkbox"/> Yes If Yes, what is the proposed length to be stabilized: _____ <input type="checkbox"/> N/A
Has the current bank stability been evaluated? (i.e. Bank Erosion Hazard Index, MPCA Channel Condition and Stability Index, Minnesota Department of Transportation (MnDOT) HydInfra, etc.) Please attach supporting documentation.	<input type="checkbox"/> Yes <input type="checkbox"/> No
What is the current streambank stability? Please attach supporting documentation and photos.	<input type="checkbox"/> Very Stable <input type="checkbox"/> Stable <input type="checkbox"/> Moderately Unstable <input type="checkbox"/> Unstable
Permitting	
Does the project trigger any LMRWD Rules (if applicable)?	<input type="checkbox"/> Rule B: Erosion and Sediment Control <input type="checkbox"/> Rule C: Floodplain and Drainage Alteration <input type="checkbox"/> Rule D: Stormwater Management: <input type="checkbox"/> Rule F: Steep Slopes <input type="checkbox"/> N/A
If the project triggers LMRWD Rules, summarize how the project intends to comply with the Rules (i.e. stormwater management).	
Provide documentation of additional permitting requirements from regulatory agencies (e.g., Minnesota DNR, MPCA, and/or additional city permits). Identify which permits are required and provide their status (in-progress, obtained, etc.) Before funds are dispersed, copies of approved permits will be required; however, approval is not required for application eligibility.	
Permit	Status

Construction Plans	
Attach Construction Plan Sheets (if applicable)	

Access Map



DISCLAIMER: The City of Eden Prairie does not warrant the accuracy nor the correctness of the information contained in this map. It is your responsibility to verify the accuracy of this information. In no event will The City of Eden Prairie be liable for any damages, including loss of business, lost profits, business interruption, loss of business information or other pecuniary loss that might arise from the use of this map or the information it contains. Map information is believed to be accurate but accuracy is not guaranteed. Any errors or omissions should be reported to The City of Eden Prairie.

*Any aerial photography and parcel geometry was obtained from Hennepin County and all users are bound by the express written contract between Hennepin County and the City of Eden Prairie.

Addresses

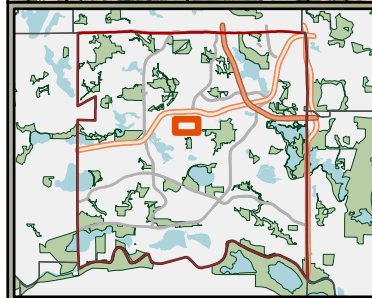
Parcels

0 300
ft

Scale: 1:3,625



Project Map



DISCLAIMER: The City of Eden Prairie does not warrant the accuracy nor the correctness of the information contained in this map. It is your responsibility to verify the accuracy of this information. In no event will The City of Eden Prairie be liable for any damages, including loss of business, lost profits, business interruption, loss of business information or other pecuniary loss that might arise from the use of this map or the information it contains. Map information is believed to be accurate but accuracy is not guaranteed. Any errors or omissions should be reported to The City of Eden Prairie.

*Any aerial photography and parcel geometry was obtained from Hennepin County and all users are bound by the express written contract between Hennepin County and the City of Eden Prairie.

0 300
ft

Scale: 1:3,625



- Addresses
- Catch Basin
- Storm - Sump
- Sump MH
- ▲ Sump
- ▲ Pond Inlet
- ▲ Pond Outlet
- Storm - Points
- Control Strc

- ✕ Crossover
- ◆ Flared End
- ★ MIA
- ▲ Overland Inlet
- ▲ Overland Outlet
- Storm Manhole
- Surge Basin Inlet
- ▶ Storm Main

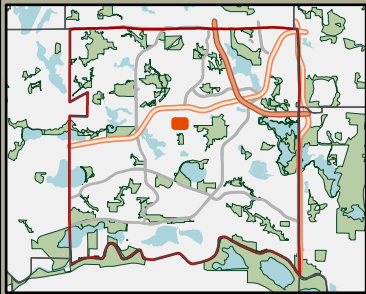
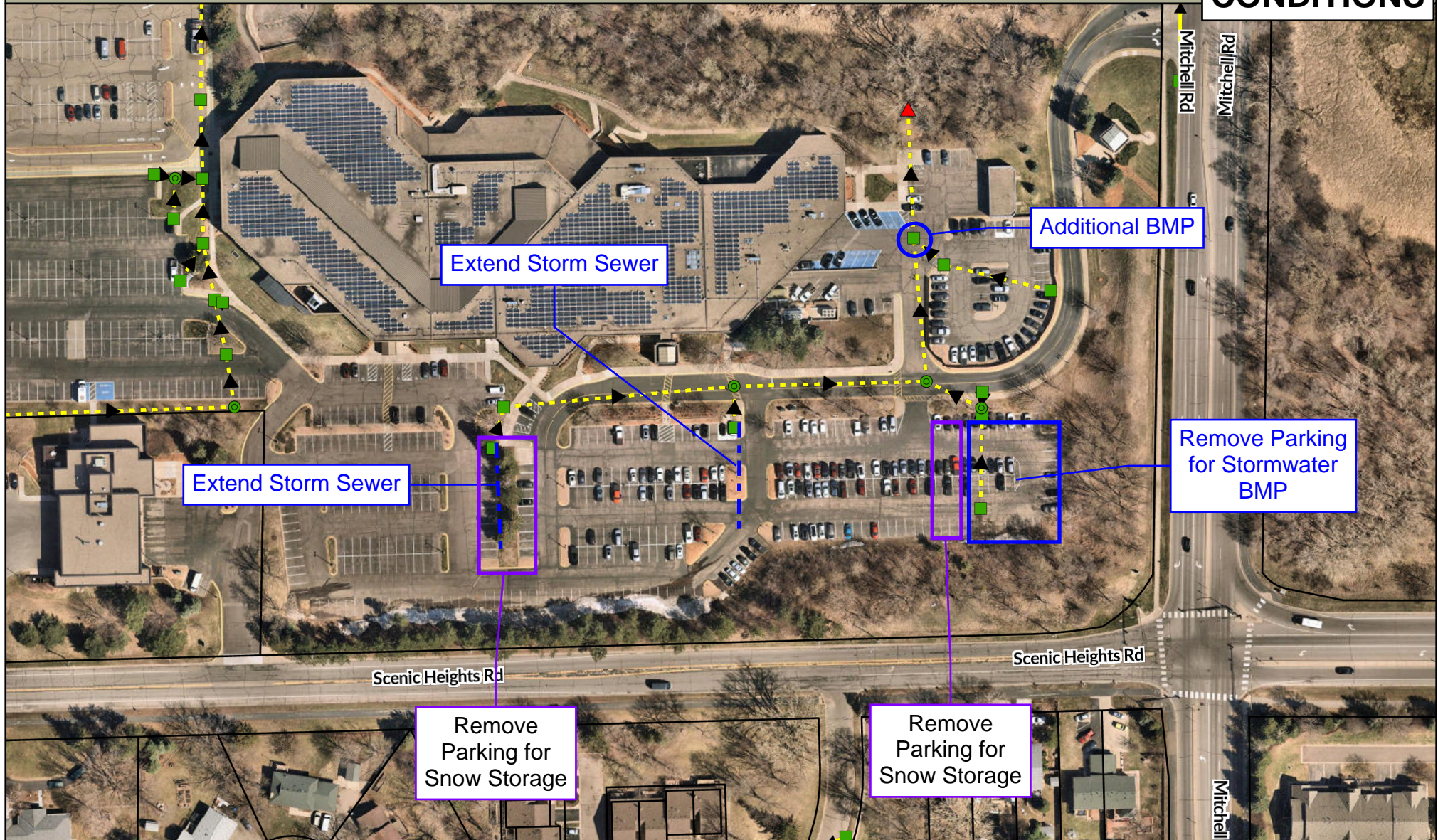
- Storm Lines - Lines
- Drain Tile
- Private Storm Pts
- Feat_Code
- Catch Basin
- Control Strc
- ◆ Flared End
- ▲ Overland Inlet
- ▲ Pond Inlet

- ▲ Pond Outlet
- Storm Manhole
- ▲ Sump
- Private Storm Lines
- Private Drain Tile
- ▶ Private Main
- Storm Pt Precision
- Plotted Inlets

- Plotted Lines
- Overland Flow
- Cont. Ponds
- Wetlands
- Mitigated Wetlands
- Non-Mitigated Wetlands
- DNR Waters
- Parcels

Eden Prairie Low Salt City Center

PROPOSED CONDITIONS



DISCLAIMER: The City of Eden Prairie does not warrant the accuracy nor the correctness of the information contained in this map. It is your responsibility to verify the accuracy of this information. In no event will The City of Eden Prairie be liable for any damages, including loss of business, lost profits, business interruption, loss of business information or other pecuniary loss that might arise from the use of this map or the information it contains. Map information is believed to be accurate but accuracy is not guaranteed. Any errors or omissions should be reported to The City of Eden Prairie.

*Any aerial photography and parcel geometry was obtained from Hennepin County and all users are bound by the express written contract between Hennepin County and the City of Eden Prairie.

0 140
ft
Scale: 1:1,682

W N E S

- Catch Basin
- Storm - Points
- Storm Manhole
- Storm Main

- Private Storm Pts
- Catch Basin
- Pond Inlet

- Storm Manhole
- Private Storm Lines
- Private Main

PROJECT COST ESTIMATE: Eden Prairie's Low Salt City Center

Cost category	Cost (\$/unit)	Unit	Quantity (Qty/Unit)	Unit	MPCA Grant Funds	Budgeted Match: Cash	Budgeted Match: In-kind	Total Budgeted Match	Total Budget
Task 1 of 4: DESIGN & CONSTRUCTION ADMINISTRATION									
Subtask 1a: Engineering									
Project design (contract)	64,800.00	each	1	each	39,800.00	25,000.00		\$ 25,000.00	\$ 64,800.00
Total 1a					\$ 39,800.00	\$ 25,000.00	\$ -	\$ 25,000.00	\$ 64,800.00
Subtask 1b: Construction Administration									
Inspection (contract)	49,980.00	each	1	each	29,980.00	20,000.00		\$ 20,000.00	\$ 49,980.00
Total 1b					\$ 29,980.00	\$ 20,000.00	\$ -	\$ 20,000.00	\$ 49,980.00
Task 1 - Total					\$ 69,780.00	\$ 45,000.00	\$ -	\$ 45,000.00	\$ 114,780.00
Task 2 of 4: PROJECT CONSTRUCTION									
Subtask 2a: Demolition and removal									
Mobilization	60,000.00	each	1	each	-	60,000.00		\$ 60,000.00	\$ 60,000.00
Removals	48,720.00	each	1	each	33,020.00	15,700.00		\$ 15,700.00	\$ 48,720.00
Total 2a					\$ 33,020.00	\$ 75,700.00	\$ -	\$ 75,700.00	\$ 108,720.00
Subtask 2b: Construction									
Earthwork	226,800.00	each	1	each	190,000.00	36,800.00		\$ 36,800.00	\$ 226,800.00
Parking lot restoration	83,500.00	each	1	each	83,500.00			\$ -	\$ 83,500.00
Erosion & sediment control	5,000.00	each	1	each	-	5,000.00		\$ 5,000.00	\$ 5,000.00
Total 2b					\$ 273,500.00	\$ 41,800.00	\$ -	\$ 41,800.00	\$ 315,300.00
Subtask 2c: Stormwater infrastructure									
Manholes + pipe	43,700.00	each	1	each	33,700.00	10,000.00		\$ 10,000.00	\$ 43,700.00
Additional BMP	42,000.00	each	1	each	1,000.00	41,000.00		\$ 41,000.00	\$ 42,000.00
Total 2c					\$ 34,700.00	\$ 51,000.00	\$ -	\$ 51,000.00	\$ 85,700.00
Subtask 2d: Restoration and planting									
Topsoil & Seeding	12,000.00	each	1	each	7,000.00	5,000.00		\$ 5,000.00	\$ 12,000.00
BMP vegetation	12,000.00	each	1	each	7,000.00	5,000.00		\$ 5,000.00	\$ 12,000.00
Total 2d					\$ 14,000.00	\$ 10,000.00	\$ -	\$ 10,000.00	\$ 24,000.00
Subtask 2e: Establishment maintenance									
Maintenance	7,000.00	each	2	year		14,000.00		\$ 14,000.00	\$ 14,000.00
Total 2e					\$ -	\$ 14,000.00	\$ -	\$ 14,000.00	\$ 14,000.00
Subtask 2f: Educational signage and resources									
Signage	3,000.00	each	4	each		12,000.00		\$ 12,000.00	\$ 12,000.00
Low salt resources	7,500.00	(lot)	1	each			7,500.00	\$ 7,500.00	\$ 7,500.00
Total 2f					\$ -	\$ 12,000.00	\$ 7,500.00	\$ 19,500.00	\$ 19,500.00
Task 2 - Total					\$ 355,220.00	\$ 204,500.00	\$ 7,500.00	\$ 212,000.00	\$ 567,220.00
Task 3 of 4: CHLORIDE REDUCTION ADVISORY GROUP									
Subtask 3a: Prepare for meetings									
Project manager	80.00	hour	40	hours			3,200.00	\$ 3,200.00	\$ 3,200.00
Consultant	200.00	meeting	10	each		2,000.00		\$ 2,000.00	\$ 2,000.00
Total 3a					\$ -	\$ 2,000.00	\$ 3,200.00	\$ 5,200.00	\$ 5,200.00
Subtask 3b: Convene meetings and follow-up									
Project manager	80.00	hour	40	hours			3,200.00	\$ 3,200.00	\$ 3,200.00
Consultant	500.00	meeting	10	each		5,000.00		\$ 5,000.00	\$ 5,000.00
Total 3b					\$ -	\$ 5,000.00	\$ 3,200.00	\$ 8,200.00	\$ 8,200.00
Task 3 - Total					\$ -	\$ 7,000.00	\$ 6,400.00	\$ 13,400.00	\$ 13,400.00
Task 4 of 4: PROJECT MANAGEMENT & REPORTING									
Subtask 4a: Project Management (City employees)									
Project Management	80.00	hour	500	hours			40,000.00	40,000.00	\$ 40,000.00
Total 4a					\$ -	\$ -	\$ 40,000.00	\$ 40,000.00	\$ 40,000.00
Subtask 4b: Semiannual reports									
Semiannual Reporting	500.00	each	6	report			3,000.00	3,000.00	\$ 3,000.00
Total 4b					\$ -	\$ -	\$ 3,000.00	\$ 3,000.00	\$ 3,000.00
Subtask 4c: Final report									
Final Report	1,000.00	each	1	report			1,000.00	1,000.00	\$ 1,000.00
Total 4c					\$ -	\$ -	\$ 1,000.00	\$ 1,000.00	\$ 1,000.00
Task 4 - Total					\$ -	\$ -	\$ 44,000.00	\$ 44,000.00	\$ 44,000.00

	\$ 425,000.00	\$ 256,500.00	\$ 57,900.00	\$ 314,400.00	\$ 739,400.00
MPCA	57%		MATCH	43%	TOTAL